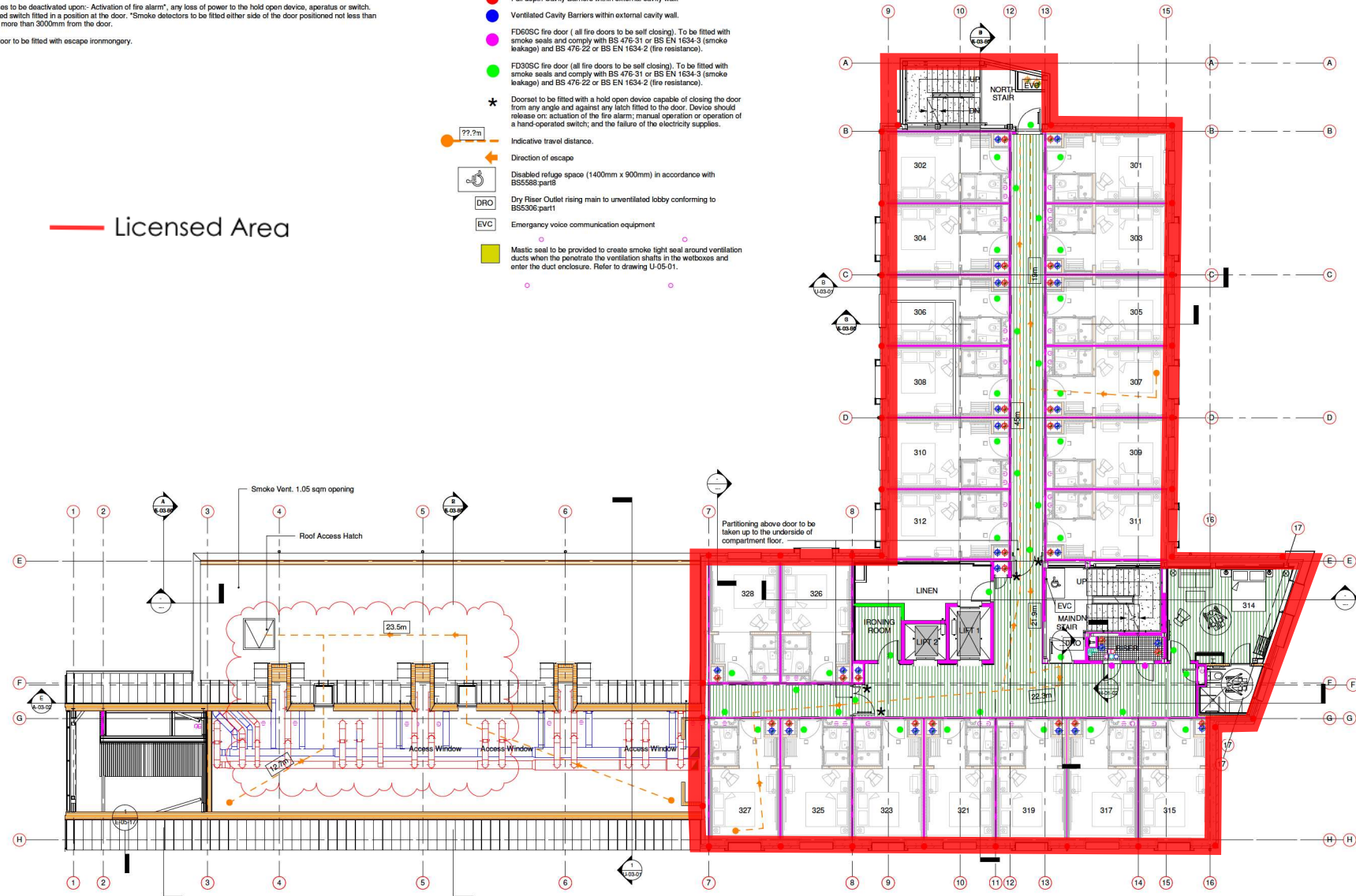


Fire Strategy Key

Notes:
 DRAWINGS TO BE READ IN CONJUNCTION WITH ALL OTHER FIRE STRATEGY DRAWINGS - "U-SERIES".
 All new steelwork / structure to receive intumescent paint finish to give 60mins fire rating REI.
 Product performance classification for all circulation routes to be Class 0 surface spread of flame.
 Corridor doors, as indicated on plans, to be fitted with magnetic hold open devices, linked to fire alarm system. All hold open doors to have a minimum of 60mm clearance to edge of door-leaf to allow for magnetic hold open hardware fixings.
 All services within risers penetrating compartment floors / walls to be fitted with fire dampers to maintain fire integrity.
 All partitions to be taken to under side of compartment floors.
 All elements of structure to achieve min 60min Fire Resistance.
 All Fire Strategy to be in line with and meet Moxy Brand Standards
 Hold open devices to be deactivated upon:- Activation of fire alarm, any loss of power to the hold open device, aperatus or switch.
 Manually operated switch fitted in a position at the door. "Smoke detectors to be fitted either side of the door positioned not less than 500mm and not more than 3000mm from the door.
 All fire escape door to be fitted with escape ironmongery.

- Compartment wall / floor achieving 60 minutes fire resistance rating REI - (Stability, integrity and insulation) in accordance with BS476:part8:20-24 and relevant recommendations of appendix A of the technical guidance document B, and in the case of a wall is to extend full storey height.
- - - - Compartment ceiling achieving 60 minutes fire resistance rating from bedroom side only. As per Woodbeton drawing 08PS17-400_A - 402.8 for slab BUS7.
- Compartment wall / floor achieving 30 minutes fire resistance rating REI - (Stability, integrity and insulation) in accordance with BS476:part8:20-24 and relevant recommendations of appendix A of the technical guidance document B, and in the case of a wall is to extend full storey height.
- Continuous Cavity Barriers within ceiling voids to be at 20m crs max.
- Full depth Cavity Barriers within external cavity wall.
- Ventilated Cavity Barriers within external cavity wall.
- FD60SC fire door (all fire doors to be self closing). To be fitted with smoke seals and comply with BS 476-31 or BS EN 1634-3 (smoke leakage) and BS 476-22 or BS EN 1634-2 (fire resistance).
- FD30SC fire door (all fire doors to be self closing). To be fitted with smoke seals and comply with BS 476-31 or BS EN 1634-3 (smoke leakage) and BS 476-22 or BS EN 1634-2 (fire resistance).
- ★ Doorset to be fitted with a hold open device capable of closing the door from any angle and against any latch fitted to the door. Device should release on: actuation of the fire alarm; manual operation or operation of a hand-operated switch; and the failure of the electricity supplies.
- Indicative travel distance.
- Direction of escape
- DRO Disabled refuge space (1400mm x 900mm) in accordance with BS5588:part8
- DRO Dry Riser Outlet rising main to unventilated lobby conforming to BS5306:part1
- EVC Emergency voice communication equipment
- Mastic seal to be provided to create smoke tight seal around ventilation ducts when they penetrate the ventilation shafts in the wetboxes and enter the duct enclosure. Refer to drawing U-05-01.

—— Licensed Area



LEVEL 3 - FIRE STRATEGY PLAN
 Scale: 1 : 100

© COPYRIGHT OF CUMMING AND CO (BERKEEN) LTD
 This drawing cannot be reproduced or used in anyway without the express written permission of the abovementioned. All design intent and content is copyright of the abovementioned.

Date	No.	Description
13-02-18	A	FORMER LOCATIONS UPDATED AND DISTANCES AMENDED TO SUIT.

Client: VASTINI HOSPITALITY B.V.
 Project: MOXY HOTEL - YORK
 Drawing Status: RIBA STAGE 5 - CONSTRUCTION

alison house
 6 castlehill
 aberdeen
 ab11 5sq
 tel 01224 355800
 fax 01224 350603
 info@cummingandco.com
 www.cummingandco.com

CLIENT: VASTINI HOSPITALITY B.V.
 PROJECT: MOXY HOTEL - YORK
 CONTENT: FIRE STRATEGY - 3RD FLOOR
 SCALE: As indicated @ A1 DATE: JAN 18
 JOB REFERENCE: 17-030 DRAWING: U-01-04 REV: A
 DRAWN BY: FM CHECKED BY: PM